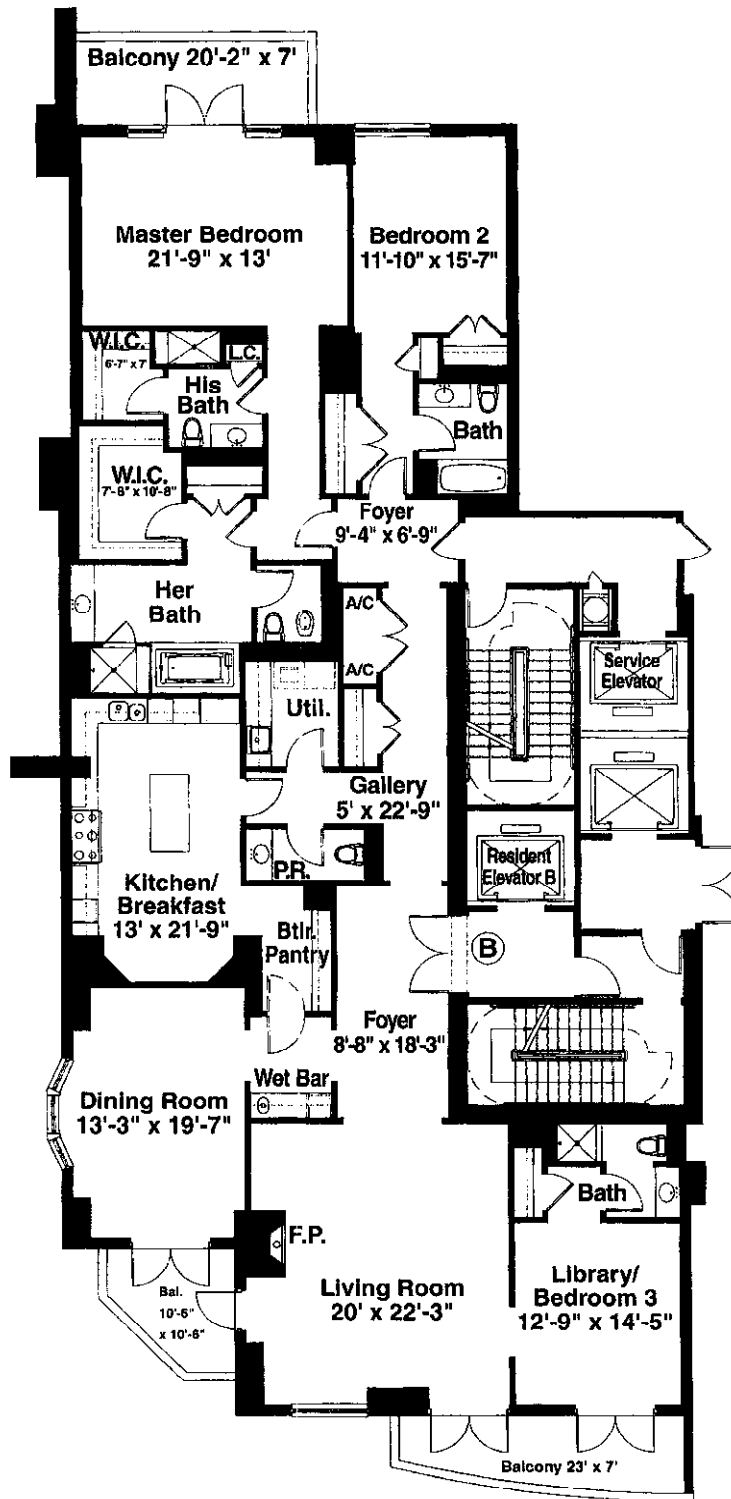




THE VENDÔME

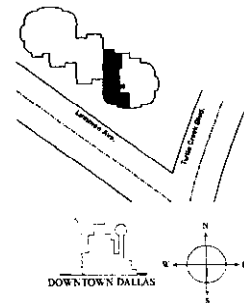
JUDY PITTMAN
EXCLUSIVE BROKER

3505 Turtle Creek Boulevard
Dallas, Texas 75219
tel (214) 522-0053
fax (214) 522-0629



B
FLOOR PLAN
3,869 Sq. Ft.

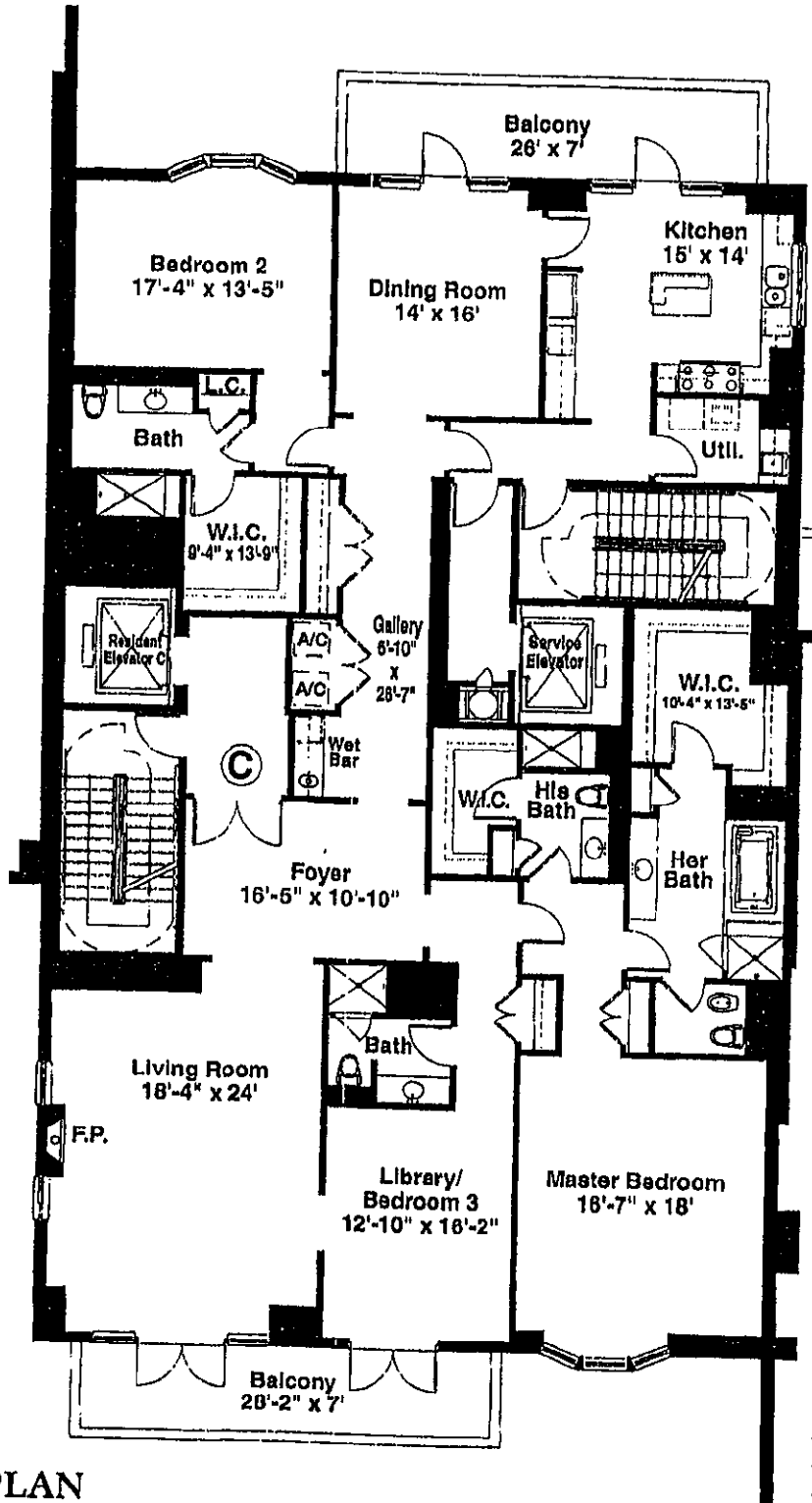
*All room dimensions and area representations are approximate.
The Vendôme has the right to modify floor plans, features, prices, materials, and designs.*





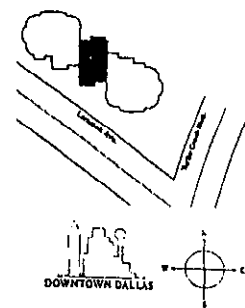
THE VENDÔME

JUDY PITTMAN
 EXCLUSIVE BROKER
 3505 Turtle Creek Boulevard
 Dallas, Texas 75219
 tel (214) 522-0053
 fax (214) 522-0629



C
FLOOR PLAN
 4,044 Sq. Ft.

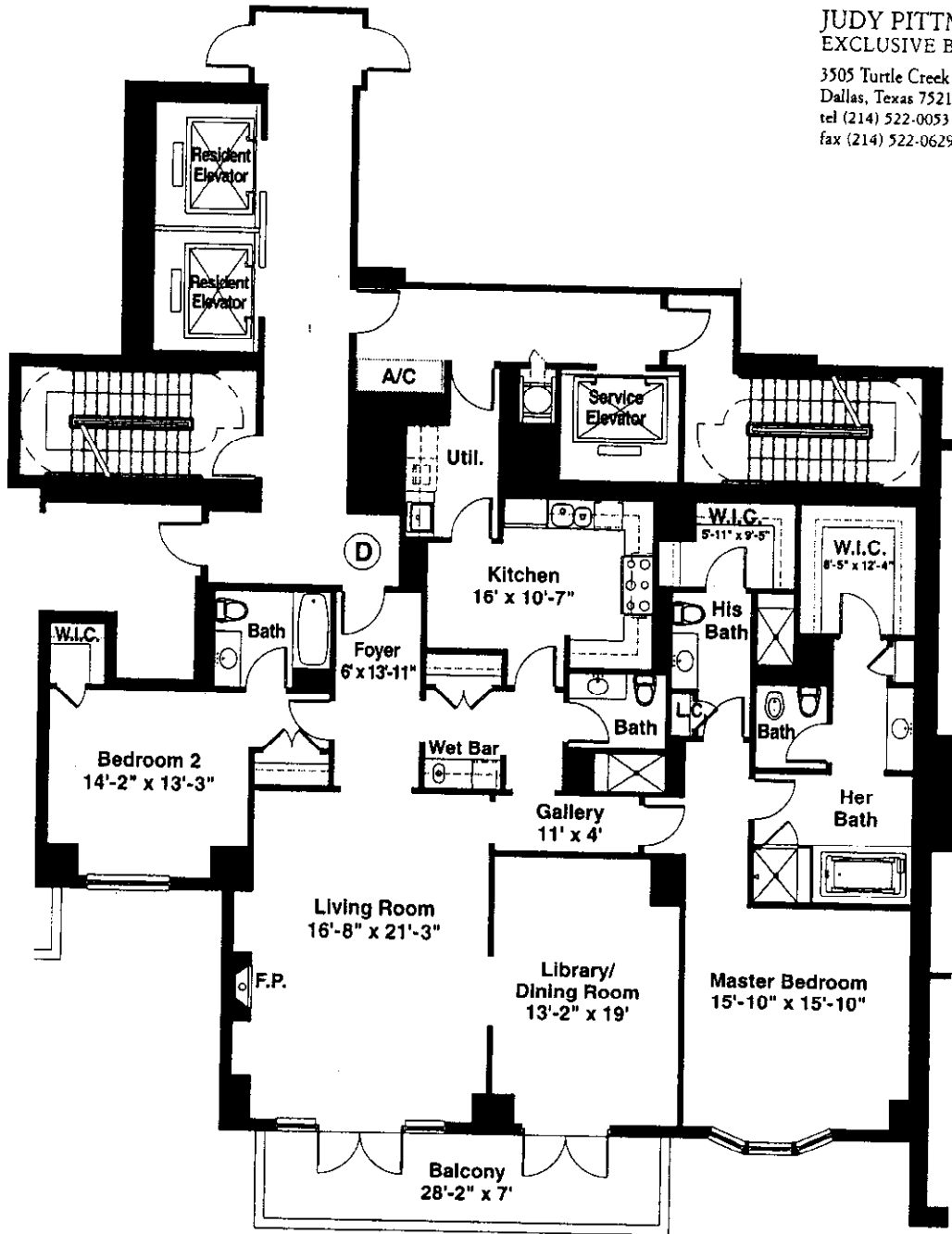
*All room dimensions and area representations are approximate.
 The Vendôme has the right to modify floor plans, features, prices, materials, and designs.*





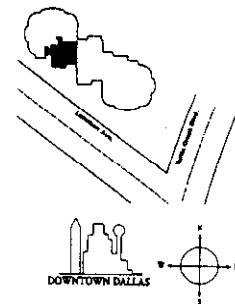
THE VENDÔME

JUDY PITTMAN
 EXCLUSIVE BROKER
 3505 Turtle Creek Boulevard
 Dallas, Texas 75219
 tel (214) 522-0053
 fax (214) 522-0629



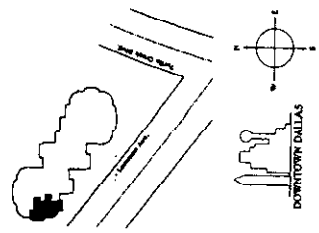
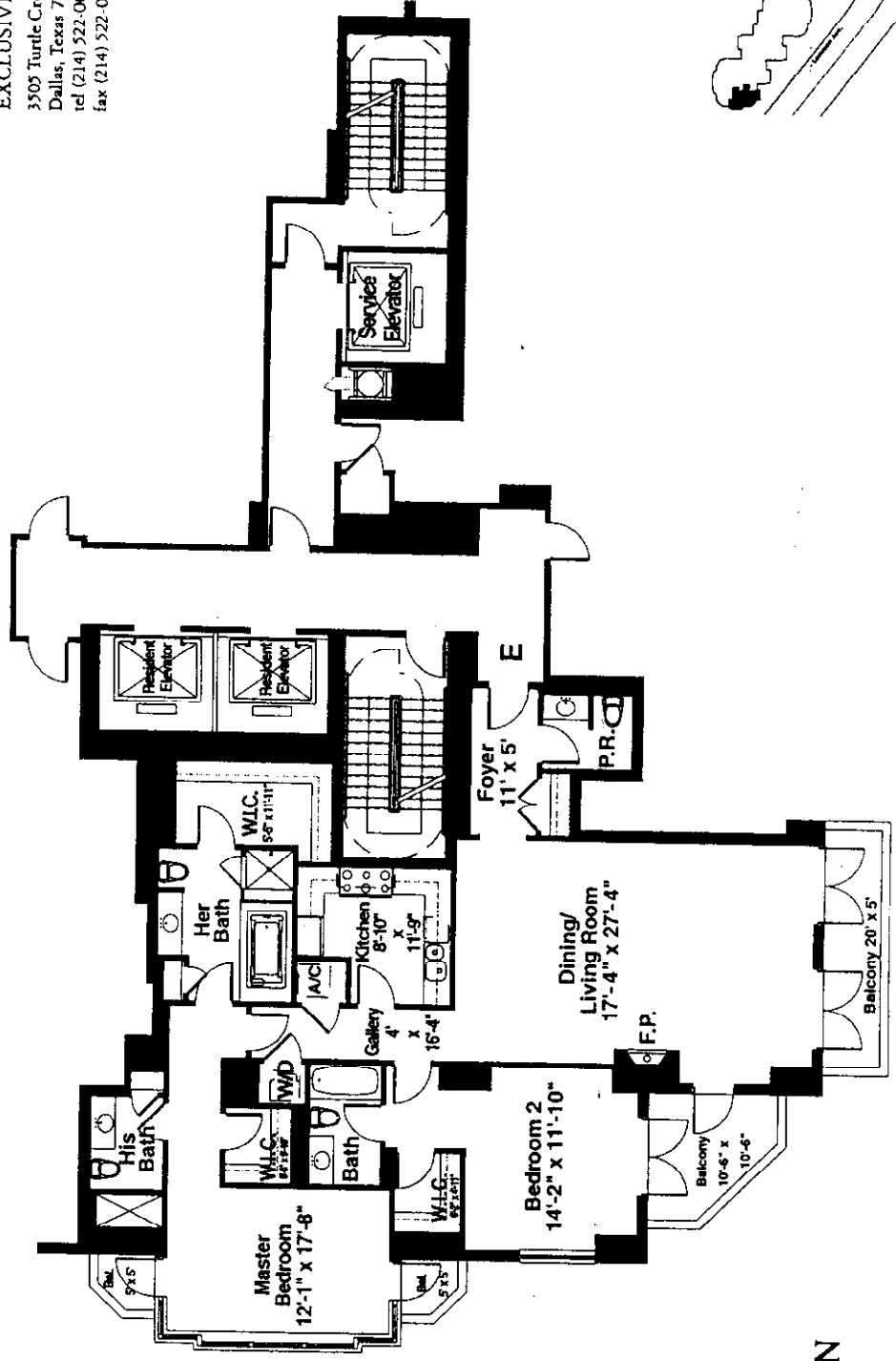
D
FLOOR PLAN
 2,691 Sq. Ft.

*All room dimensions and area representations are approximate.
 The Vendôme has the right to modify floor plans, features, prices, materials, and designs.*



THE VENDÔME

JUDY PITTMAN
 EXCLUSIVE BROKER
 3305 Turtle Creek Boulevard
 Dallas, Texas 75219
 tel (214) 522-0053
 fax (214) 522-0629

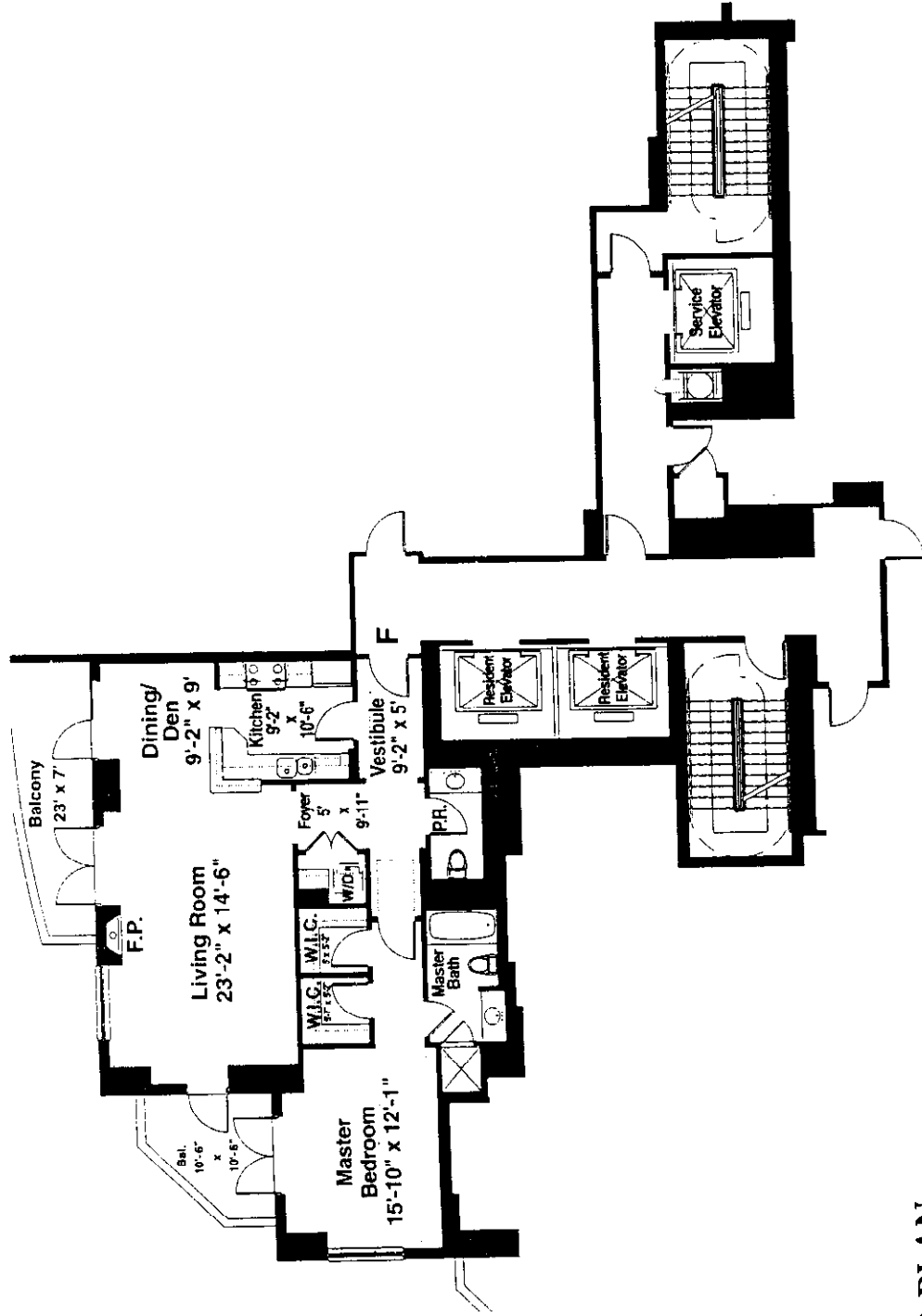
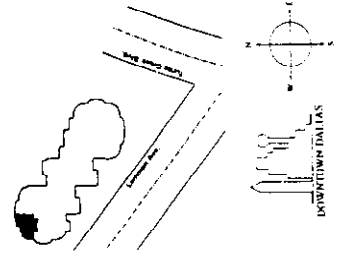


E FLOOR PLAN
2,173 Sq. Ft.

All room dimensions and area representations are approximate. The Vendôme has the right to modify floor plans, features, prices, materials, and designs.

THE VENDÔME

JUDY PITTMAN
 EXCLUSIVE BROKER
 3505 Turtle Creek Boulevard
 Dallas, Texas 75219
 tel. (214) 522-0053
 fax (214) 522-0629



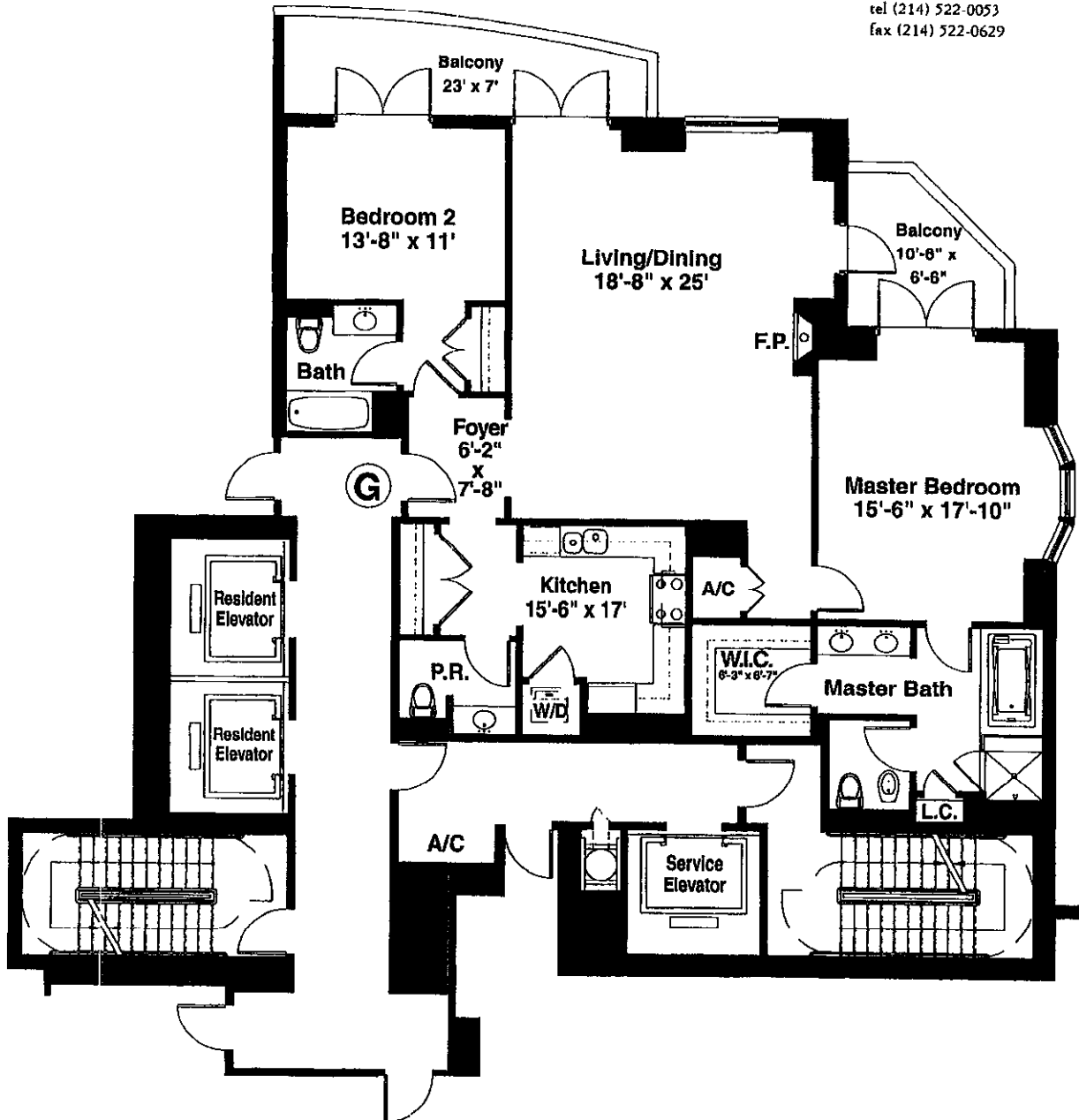
F
FLOOR PLAN
1,448 Sq. Ft.

*All room dimensions and area representations are approximate.
 The Vendôme has the right to modify floor plans, features, prices, materials, and designs.*


THE VENDÔME

JUDY PITTMAN
EXCLUSIVE BROKER

3505 Turtle Creek Boulevard
Dallas, Texas 75219
tel (214) 522-0053
fax (214) 522-0629



G
FLOOR PLAN
1,941 Sq. Ft.

*All room dimensions and area representations are approximate.
The Vendôme has the right to modify floor plans, features, prices, materials, and designs.*

